

The Construction (Design and Management) Regulations 2015 (CDM 2015)



Extract from CDM Awareness Training

Presenter : Stuart McCreedy BEng CMIOSH RMaPS2015



The **Construction (Design & Management) Regulations 2015** (CDM 2015) are the main set of regulations for managing the health, safety and welfare of construction projects.

CDM **applies to all** building and construction work and includes new build, demolition, refurbishment, extensions, conversions, repair and maintenance.

(Reg 6)

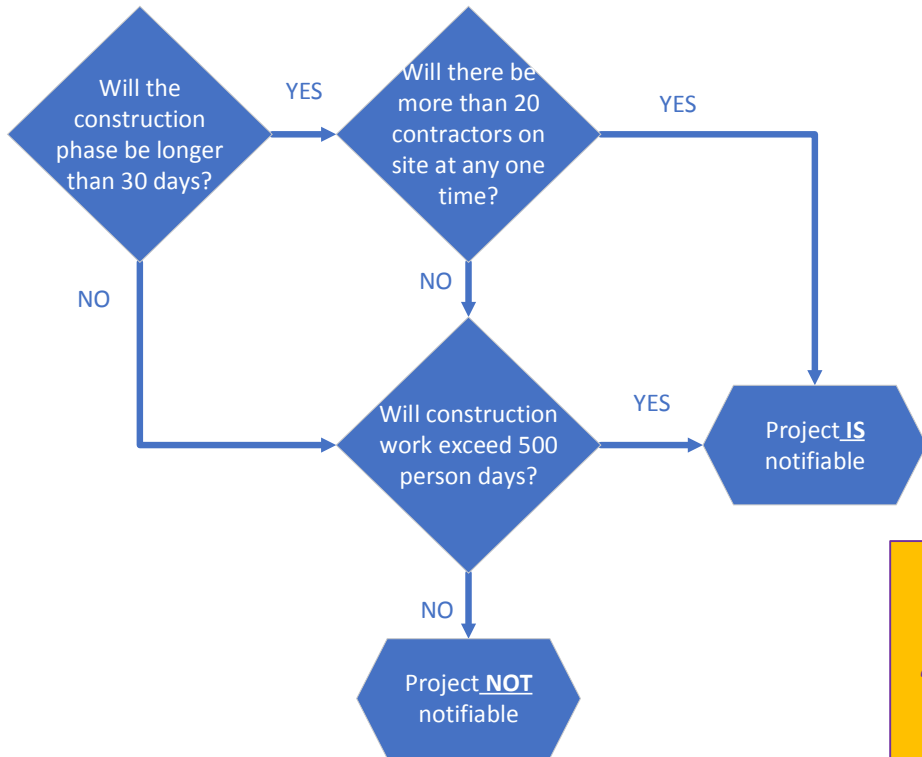
Construction work to be notified to HSE:

- Lasts more than **30 days**, and have more than **20** workers at any one time **Or**
- Involves more than **500 person days**

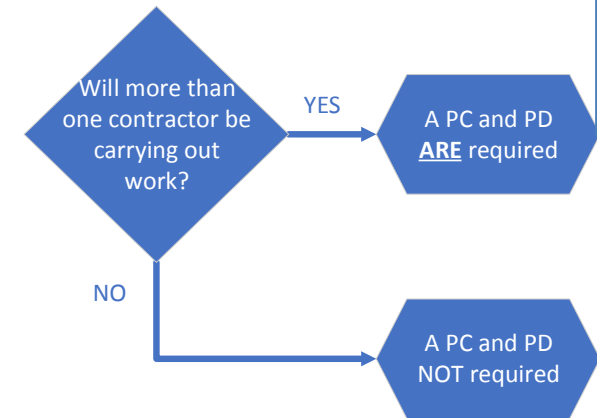
**Notification is carried out by the Client
or an appointed person**

Read on for more details about the PC and PD roles

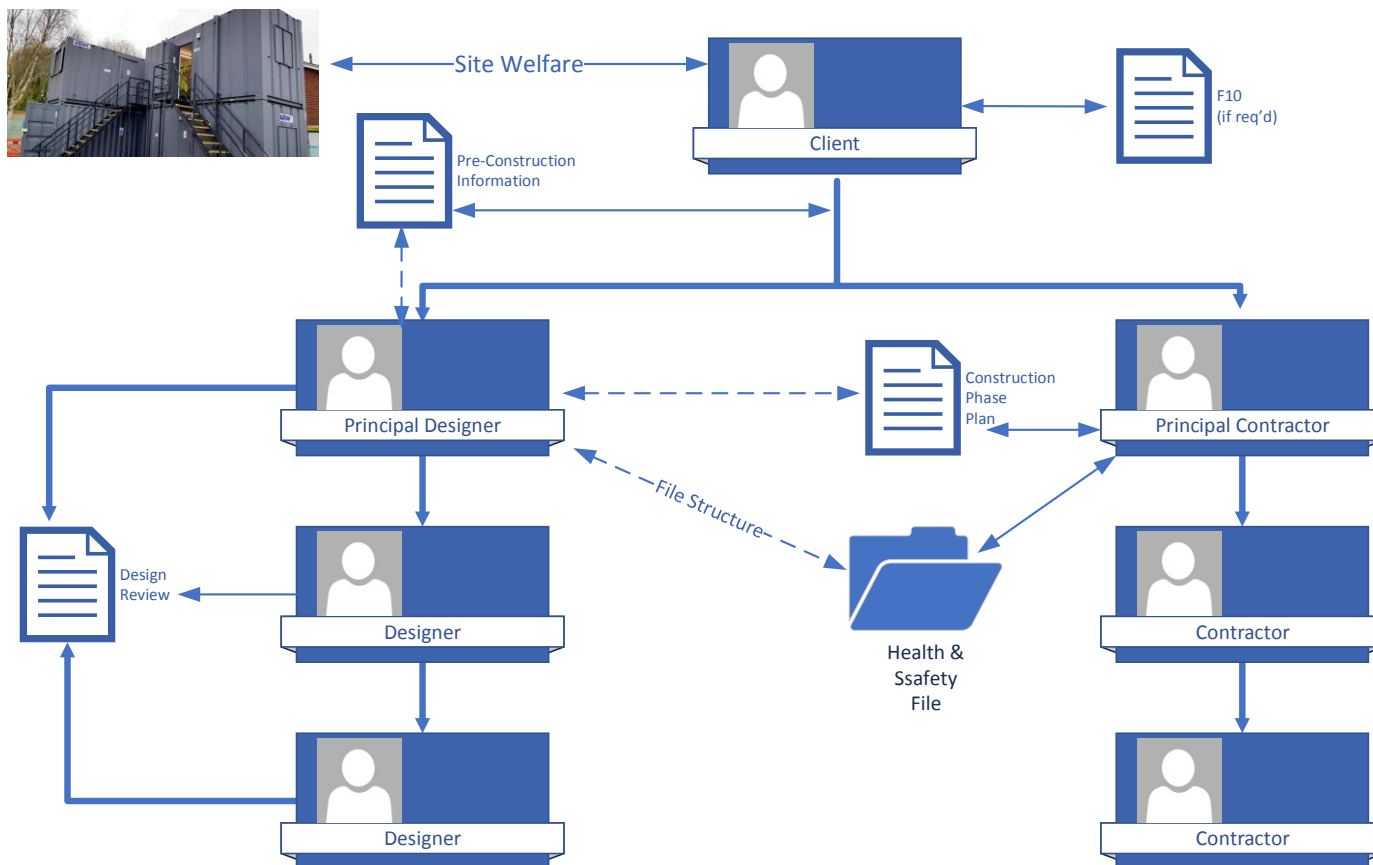
Is the Project Notifiable?



Is a PD & PC Required?



The **F10** form
“Notification of construction project”
is the vehicle for notifying the HSE



Clients are organisations or individuals for whom a construction project is carried out.

Make suitable arrangements for managing a project. This includes making sure:

- other duty holders are appointed;
- sufficient time and resources are allocated.

Make sure:

- relevant information is prepared and provided to other duty holders;
- the principal designer and principal contractor carry out their duties;
- welfare facilities are provided.

Designers are those, who as part of a business, prepare or modify designs for a building, product or system relating to construction work.

When preparing or modifying designs, to eliminate, reduce or control foreseeable risks that may arise during:

- **construction; and**
- **the maintenance and use of a building once it is built.**

Provide information to other members of the project team to help them fulfil their duties.

Principal Designer (PD)

Principal designers are designers appointed by the client in projects involving more than one contractor. They can be an organisation or an individual with sufficient knowledge, experience and ability to carry out the role.

Plan, manage, monitor and coordinate health and safety in the pre-construction phase of a project. This includes:

- identifying, eliminating or controlling foreseeable risks;
- ensuring designers carry out their duties.

Prepare and provide relevant information to other duty holders.

Provide relevant information to the principal contractor to help them plan, manage, monitor and coordinate health and safety in the construction phase.

Principal Contractor (PC)

Principal contractors are contractors appointed by the client to coordinate the construction phase of a project where it involves more than one contractor.

Plan, manage, monitor and coordinate health and safety in the construction phase of a project. This includes:

- liaising with the client and principal designer;
- preparing the construction phase plan;
- organising cooperation between contractors and coordinating their work.

Ensure:

- suitable site inductions are provided;
- reasonable steps are taken to prevent unauthorised access;
- workers are consulted and engaged in securing their health and safety; and
- welfare facilities are provided.

Contractors are those who do the actual construction work and can be either an individual or a company.

Plan, manage and monitor construction work under their control so that it is carried out without risks to health and safety.

For projects involving more than one contractor, coordinate their activities with others in the project team – in particular, comply with directions given to them by the Principal Designer or Principal Contractor.

For single-contractor projects, prepare a construction phase plan.

We hope you found this information useful.

If you need to discuss this topic further, please call us on **01925 606420**.

This was an extract from our half-day CDM Awareness training course. We run this for clients with an option to add on an afternoon “deep dive” session based on your own live or planned projects. Call us if you are interested in our practitioner-led training.